

YOUR BENEFITS | YOUR FUTURE

What You Need to Know About Your CalPERS
Local Miscellaneous Benefits



CONTENTS

Introduction	3
Your Retirement Benefits	4
Service Retirement or “Normal” Retirement	4
Disability Retirement	4
Industrial Disability Retirement	4
How Your Retirement Is Funded	5
How Your Retirement Benefit Is Calculated	5
Estimating Your Retirement Benefit	8
Your Retirement Payment Options	9
Survivor Continuance	10
Pre-Retirement Death Benefits	11
Not Eligible to Retire	11
Eligible to Retire	12
1959 Survivor Benefit Program	14
Health Insurance Covered Under PEMHCA	16
Your Separation Date and Your Retirement Date	16
Medicare	18
Making Changes to Your Health Plan After Retirement	19
Other Considerations	20
Social Security and Your CalPERS Pension	20
Reciprocity— Other California Public Retirement Systems	20
Cost-of-Living Adjustments	20
Inflation Protection	21
Sick Leave Credit	21
Internal Revenue Code (IRC) Section 401(a)(17)	
Contribution and Salary Limit	22
Internal Revenue Code (IRC) Section 415(b)	
Retirement Benefit Limit	22
Divorce or Termination of Domestic Partnership	23
Power of Attorney	23
Benefit Forfeiture for Felony Convictions	23
Retirement Formulas and Benefit Factors	24
2% at 55 Benefit Factors	24
2% at 60 Benefit Factors	26
2% at 62 Benefit Factors	28
2.5% at 55 Benefit Factors	30
2.7% at 55 Benefit Factors	32
3% at 60 Benefit Factors	34



Become a More Informed Member	36
CalPERS Website	36
myCalPERS	36
CalPERS Education Center	36
Experience CalPERS Through Social Media	36
Reach Us by Phone	36
Visit Your Nearest CalPERS Regional Office	37
Glossary	38
Privacy Notice	40

INTRODUCTION

Retirement can be one of the best stages of your life. It can also be complicated, and at times stressful, if you are not educated about your benefits and have not done the proper planning. Understanding the fundamentals of your CalPERS retirement benefits is a good first step toward a happy and fruitful retirement.

This publication describes retirement benefits and retirement benefit formulas for local miscellaneous members. Local miscellaneous members are those who are employed by a public agency or special district that has contracted with CalPERS, who are **not** involved in law enforcement, fire suppression, the protection of public safety, or employed in a position designated by law as local safety.

You deserve to understand the full spectrum of retirement and death benefits available for you and your beneficiary (or beneficiaries). This publication will help educate you about your retirement formulas and benefits. It will also provide you information on contributions, health benefits, and other programs you should consider before and after retirement.

You may obtain a copy of any publication or form referenced in this publication by calling CalPERS at **888 CalPERS** (or **888-225-7377**) or by visiting our website at www.calpers.ca.gov.

YOUR RETIREMENT BENEFITS

There are three types of retirement benefits:

- Service retirement or “normal” retirement
- Disability retirement
- Industrial disability retirement

Emergency Retirement

CalPERS will expedite retirement processing for you if you are terminally ill or facing imminent death. Contact CalPERS or your employer immediately if there is a need for emergency retirement.

Service Retirement or “Normal” Retirement

To be eligible for service retirement, you must be at least age 50 and have a minimum of five years of CalPERS-credited service. If you became a member on or after January 1, 2013, you must be at least age 52. If you are employed on a part-time basis, and have worked at least five years, contact CalPERS to find out if an exception will apply to you. There is no mandatory retirement age for local miscellaneous members.

If you are considering applying for a service retirement, refer to the CalPERS publications *Planning Your Service Retirement* (PUB 1) and *A Guide to Completing Your CalPERS Service Retirement Election Application* (PUB 43).

Disability Retirement

This type of retirement applies to you if you become disabled and can no longer perform the duties of your job. Disability retirement has no minimum age requirement, and does not have to be job-related. However, you must have a minimum of five years of CalPERS service credit. If you are employed on a part-time basis and you have worked at least five years, contact CalPERS to find out if an exception will apply to you.

Industrial Disability Retirement

Talk to your employer to find out if they have contracted for this benefit. This type of retirement applies to you if you become disabled from a job-related injury or illness and can no longer perform the duties of your job. Industrial disability retirement has no minimum age or service credit requirement.

You may apply for a disability or industrial disability retirement if:

- You are working for a CalPERS-covered employer; or
- You are within four months of separation from a CalPERS-covered employer; or
- You separated at any time from your CalPERS-covered employer because of a disability and you have remained disabled since then; or
- You are on military or approved leave.

Once CalPERS receives a complete application package from you or someone else on your behalf (such as your employer), we will review your file to see if the information is current and complete. After verification for completeness, CalPERS can normally make a determination within four to six months.

If you are considering applying for disability or industrial disability retirement, refer to the CalPERS publication *A Guide to Completing Your CalPERS Disability Retirement Election Application* (PUB 35).

How Your Retirement Is Funded

Three sources fund a defined benefit retirement plan like CalPERS. First, employees generally make contributions into the System. The percentage of your contribution is fixed by statute and is generally intended to be an amount that will cover half of the normal cost of the benefit earned per year. Normal cost will vary by benefit type, as higher benefit formulas have higher normal costs. The second source of funding is earnings from the investment of System assets in stocks, bonds, real estate, and other investment vehicles. The amount contributed from this source fluctuates from year to year. The balance of the funding is provided by employer contributions. Employer contributions decline when investment returns rise and increase when investment returns decline.

In a defined benefit retirement plan, you will receive a benefit determined by a set formula. CalPERS uses your years of service, age at retirement, and highest average annual compensation during any consecutive 12- or 36-month period of employment. This contrasts with a defined contribution plan, in which the benefits are determined not by a formula, but solely by the amount of contributions in an account, plus earnings.

How Your Retirement Benefit Is Calculated

Now that you understand the basic building blocks of a defined benefit retirement plan, it's time to learn how to calculate your retirement benefit. Three factors are multiplied together to calculate your service retirement:

- Service credit
- Benefit factor
- Final compensation

Service Credit

You earn service credit for each year or partial year you work for a CalPERS-covered employer. Service credit accumulates on a fiscal year basis, July 1 through June 30. You may view your current service credit at any time by logging in to myCalPERS at my.calpers.ca.gov or by referring to your CalPERS Annual Member Statement to verify your service credit as of June 30.



Pay Rate

Pay rate is your base pay, paid on a full-time basis during normal working hours.

In some cases, you may be eligible for other types of service credit that can help you maximize your retirement benefits. Other types of service include:

- Unused sick leave at retirement
- Redeposit of contributions you previously withdrew from CalPERS
- Service with a CalPERS-covered employer prior to your date of membership
- Service with a public agency prior to the date of that agency's agreement with CalPERS
- Certain types of leaves of absence, Peace Corps, AmeriCorps VISTA, AmeriCorps, or military service

For more information about service credit, refer to the CalPERS publications *A Guide to Your CalPERS Service Credit Purchase Options* (PUB 12) and *A Guide to Your Military Service Credit Options* (PUB 15).

Benefit Factor

Your benefit factor is the percentage of pay to which you are entitled for each year of service. It is determined by your age at retirement and the retirement formula based on your membership date with each employer. This publication explains the following local miscellaneous retirement formulas:

$$\begin{array}{cccc} 2^{\text{percent}}_{@55} & 2^{\text{percent}}_{@60} & 2^{\text{percent}}_{@62}^* & 25^{\text{percent}}_{@55} \\ 2.7^{\text{percent}}_{@55} & 3^{\text{percent}}_{@60} & & \end{array}$$

Refer to your CalPERS Annual Member Statement to verify your retirement formula(s).

Understanding Your Retirement Formula

Starting on page 24, you'll find two charts for each of the local miscellaneous retirement formulas. The first chart shows how the benefit factor increases for each quarter year of age. The second chart shows the percentage of final compensation you will receive.

If you became a member prior to January 1, 2013, but you permanently separate from employment and return to membership after a break in service of more than six months, you are subject to the retirement formula in place on January 1, 2013, for any service credit earned after that date. This does not apply if you return to the same employer. The same employer does not necessarily mean the employer you last worked for. For example, if you worked for a public agency and then left to work for a state agency or school, you can return to the same public agency you previously worked for and it would be considered the same public agency employer.

* Membership date on or after January 1, 2013.



Note: All State of California departments are considered the same state employer. All school county offices and districts are considered the same school employer. Each public agency is considered a separate employer.

Final Compensation

Your final compensation is the highest average annual compensation earnable for either 12 or 36 consecutive months, depending on your membership date and employer's contract. Which compensation period we use depends on your retirement formula(s). If you are not sure, ask your personnel office. We use your full-time pay rate, not your earnings. If you work part time, we will use your full-time equivalent pay rate to determine your final compensation. myCalPERS automatically finds and uses the highest compensation period during your employment with CalPERS.

If you have a combination of classic and California Public Employees' Pension Reform Act (PEPRA) service, we determine the final compensation for service credit accrued as a classic member separately from the final compensation for service accrued as a PEPRA member. We use both figures when calculating your retirement benefit.

If you are a local member of CalPERS who was first elected or appointed to a city council or county board of supervisors on or after July 1, 1994, then your final compensation is based on the highest annual average compensation earnable during the period of state service in each elective or appointed office. Other system salaries cannot be used (Government Code section 20039).

If your membership date is on or after January 1, 2013, there is a cap on the compensation used to calculate your benefit. If your service is coordinated with Social Security, the compensation cap used to calculate your benefit is equal to the 2013 Social Security wage base, adjusted by the Consumer Price Index for All Urban Consumers: City Average. For 2017 the cap was \$118,775. If your service credit is not coordinated with Social Security, the compensation cap used to calculate your benefit is equal to 120 percent of the 2013 Social Security wage base, adjusted by the Consumer Price Index for All Urban Consumers: City Average, which was \$142,530 in 2017. The compensation limit is calculated based on the limit in effect for each calendar year included in the final compensation period.

If your CalPERS service was coordinated with Social Security, you did not contribute on the first \$133.33 of your monthly earnings. So, when computing your retirement allowance, you must reduce your final compensation by \$133.33.*

* If your membership date is on or after January 1, 2013, and your service is coordinated with Social Security, you are not subject to the \$133.33 reduction in final compensation.

Special Compensation

Certain items such as special compensation earned during your final compensation period may be included in your final compensation. Contact CalPERS if you are unsure which items of special compensation can be included.

Estimating Your Retirement Benefit

More Than One Year From Retirement

You have two options for generating retirement estimates when you are more than one year from your expected retirement date.

The first option is to log in to my|CalPERS at my.calpers.ca.gov, which requires a username and password, to obtain an estimate that incorporates data your employer already reported to CalPERS. You can generate a variety of scenarios and save them in my|CalPERS for future reference.

The second option is to use the CalPERS Retirement Estimate Calculator on our website at www.calpers.ca.gov. This online calculator allows you to generate multiple estimates, customizing them to include projections based on:

- Career plans
- Expected promotions or pay increases
- Special compensation
- Possible changes to your time base
- Any expected formula changes
- Alternative retirement dates
- Additional service credit

The estimate will provide only the Unmodified Allowance. You can print but not save estimates produced using this calculator.



Within One Year of Retirement

If you are within one year of your expected retirement date, you may request a CalPERS-generated retirement estimate by completing a *Retirement Allowance Estimate Request* form and mailing it to the address on the form. You can find this form on our website at www.calpers.ca.gov.

A CalPERS-generated retirement estimate uses your most current CalPERS account information, but does not include projections of salary increases, special compensation, or other job-related changes. It allows you to make informed retirement decisions and verify that our records properly reflect or match yours.

When you eventually submit your retirement election application, you must specify a retirement option and designate a beneficiary. The CalPERS-generated estimate may display options that are not available with the online Retirement Estimate Calculator.

You are limited to **two** CalPERS-generated estimate requests in a 12-month period and must be within one year of retirement.

Your Retirement Payment Options

At retirement, you can choose to receive the highest benefit payable, which is referred to as the “Unmodified Allowance.” The Unmodified Allowance provides a monthly benefit to you that ends upon your death.

You also have the choice of requesting a reduction in the Unmodified Allowance to provide a lump-sum or lifetime monthly benefit for a beneficiary upon your death. For more information about the retirement payment options available, review the CalPERS publication *Planning Your Service Retirement* (PUB 1).

Survivor Continuance

Survivor Continuance will apply only if you have an eligible family member as of the date of your death.

Impact of Social Security

If your service is not coordinated with Social Security, the Survivor Continuance will be one-half of your Unmodified Allowance. If your service is coordinated with Social Security, the Survivor Continuance will be one-quarter of your Unmodified Allowance. If you have some time covered and some time not covered under Social Security, or if you have a combination of service under CalPERS with the state or a public agency, special consideration must be given to figure the Survivor Continuance benefit amount.

Survivor Continuance

In making a decision about whether to reduce your Unmodified Allowance to provide for a beneficiary, you will want to consider if your employer offers Survivor Continuance. This is a contracted employer-paid benefit that public agency employers can offer you. This benefit consists of a monthly allowance that automatically continues to an eligible survivor following your death after retirement regardless of the retirement option you select.

Who Is Eligible?

- Your spouse, if you were married for at least one year before your retirement and remained married until the date of your death, will receive the Survivor Continuance benefit for life. (For disability retirement, you need only to have been married at retirement and remained married until the date of your death.)
- Your domestic partner, if you were legally registered at least one year prior to your retirement and continuously until your death, will receive the Survivor Continuance benefit for life. (For disability retirement, you need only to have been registered as domestic partners at retirement and remained registered until the date of your death.)
- If you do not have an eligible spouse or registered domestic partner, your natural or adopted unmarried children under age 18 will receive this monthly benefit until marriage or age 18. An unmarried child who was disabled prior to age 18 and whose disability has continued without interruption will receive this benefit until the disability ends or until marriage.
- Qualifying financially dependent parents, if none of the above.

PRE-RETIREMENT DEATH BENEFITS

As a CalPERS member, you are eligible for various pre-retirement death benefits depending on your membership category, employer, retirement eligibility status, and other factors. The benefits range from a simple return of your contributions plus interest to a monthly allowance equal to what you would have received upon retirement payable to a spouse or domestic partner. To be eligible for any type of monthly pre-retirement death benefit, your spouse or domestic partner must have been either married to you or legally registered before the occurrence of the injury or the onset of the illness that resulted in your death or for at least one year prior to your death.

Each member's death benefits can vary significantly depending on circumstances and data. Questions relating to specific situations should be addressed to CalPERS for a more accurate description of individual benefits.

Upon a member's pre-retirement death, the employer and surviving family members are encouraged to immediately contact CalPERS for assistance.

For your convenience, we have divided the pre-retirement section into two parts:

- Not Eligible to Retire
- Eligible to Retire

Not Eligible to Retire

You must be at least age 50* and have a minimum of five years of CalPERS-credited service or have worked part time for at least five years to be eligible to retire. If you pass away before you are eligible to retire, your beneficiary(ies) is entitled to the following benefits:

Basic Death Benefit

Your beneficiary will receive a lump-sum payment of:

- A refund of your contributions, plus interest; and
- Up to six months' pay (one month's salary rate for each year of current service to a maximum of six months).

Your beneficiary will be determined as follows:

- Named beneficiary, or if none;
- Spouse or registered domestic partner, or if none;
- Your children, or if none;
- Parents, or if none;
- Brothers and sisters, or if none;
- Estate if probated, or if not;
- Trust, or if none;
- Next of kin, as provided by law.

* Or at least age 52 if you became a member on or after January 1, 2013.

Pre-Retirement Death Benefits Designations

If you name a beneficiary other than your spouse or registered domestic partner, your spouse or registered domestic partner will still receive their community property share. The remainder will be paid to your designated beneficiary(ies). To designate a beneficiary, please obtain a CalPERS **Beneficiary Designation** form from your personnel office or from our website at www.calpers.ca.gov. (This designation will be valid only if your death is not job-related. Different rules apply to job-related death benefit eligibility.)

..... and

1959 Survivor Benefit

Talk to your employer to find out if they have contracted for this benefit.

Applicable only for members not covered under Social Security while employed under a CalPERS-covered agency. The 1959 Survivor Death Benefit may not be payable if the Special Death Benefit is elected.

Eligible to Retire

If you pass away at age 50* or over with a minimum of five years of CalPERS-credited service, your beneficiary(ies) is eligible for the following monthly benefits:

Pre-Retirement Option 2W Death Benefit**

Talk to your employer to find out if they have contracted for this benefit. Your eligible spouse or registered domestic partner may choose to receive a monthly allowance equal to the amount you would have received if you had retired under a service retirement on the date of your death and elected Option 2W.** The benefit is payable to your spouse or domestic partner until death. Upon the death of your spouse or domestic partner, the benefit will continue to your natural or adopted unmarried children under age 18.

..... or

1957 Survivor Benefit

This benefit provides a monthly allowance equal to one-half of what your highest service retirement allowance would have been had you retired on the date of your death. Those eligible to receive this allowance are your spouse or registered domestic partner, or if none, your natural or adopted unmarried children under age 18.

* Or at least age 52 if you became a member on or after January 1, 2013.

** Provides 100 percent of the option portion of your ongoing monthly benefit.

..... or

Basic Death Benefit

The Basic Death Benefit will be paid if:

- No one is eligible for either of the monthly allowances described above; or
- The person who is eligible for one of the monthly allowances above chooses instead to receive the Basic Death Benefit.
- A person other than a spouse or registered domestic partner is designated as a beneficiary to receive all or a portion of your lump-sum death benefit.*

Benefit Payments

Your beneficiary will receive a lump-sum payment of:

- A refund of your contributions plus interest; and
- Up to six months' pay (one month's salary rate for each year of current service to a maximum of six months).

If no one is eligible for the Pre-Retirement Option 2W** Death Benefit, the 1957 Survivor Benefit, or the Special Death Benefit (if applicable), your beneficiary will be determined as follows:

- Named beneficiary, or if none;
- Spouse or registered domestic partner, or if none;
- Children, or if none;
- Parents, or if none;
- Brothers and sisters, or if none;
- Estate if probated, or if not;
- Trust, or if none;
- Next of kin, as provided by law.

..... and

1959 Survivor Benefit

Talk to your employer to find out if they have contracted for this benefit. Applicable only for members not covered under Social Security while employed under a CalPERS-covered agency. The 1959 Survivor Death Benefit may not be payable if the Special Death Benefit is elected.

* No part of the Basic Death Benefit is payable if the Special Death Benefit is paid.
 ** Provides 100 percent of the option portion of your ongoing monthly benefit.

Inactive Members

Beneficiaries of members who were separated from employment more than 120 days for non-health reasons are only eligible for the Limited Death Benefit, which consists of a return of contributions and interest from the member's account.



1959 Survivor Benefit Program

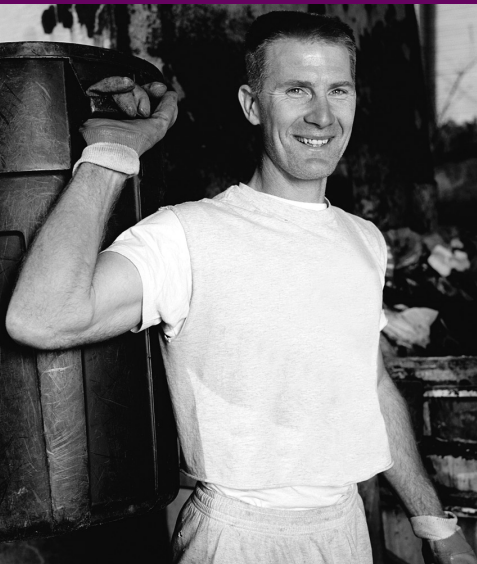
The 1959 Survivor Benefit coverage is available by contract amendment for those not covered by federal Social Security with their employer. Covered members are required to pay at least a \$2 monthly fee that is deducted from their salary specifically to fund the 1959 Survivor Benefit Program.

The program provides a monthly allowance to eligible survivors of members who were covered by this benefit program and died before retirement. The 1959 Survivor Benefit allowance is payable in addition to any other pre-retirement death benefit paid by CalPERS, with the possible exception of the Special Death Benefit. If the 1959 Survivor Benefit is greater than the Special Death Benefit, then the difference is paid as the 1959 Survivor Benefit.

1959 Survivor Monthly Benefit Levels

Currently, there are five different benefit levels for local miscellaneous members. Your coverage depends on your employer's contract with CalPERS. Refer to the following chart to determine the amounts paid under each level, depending on the number of eligible survivors.

Benefit Level	One Survivor	Two Survivors	Three or More Survivors ***
Level 1*	\$180	\$360	\$430
Level 2*	\$225	\$450	\$538
Level 3*	\$350	\$700	\$840
Level 4	\$950	\$1,900	\$2,280
Indexed Level**	\$714.10	\$1,428.20	\$2,142.30



* Levels 1, 2, and 3 are closed to new agency contract amendments.

** The amounts quoted are effective January 1, 2018. These amounts will increase by 2 percent on January 1, 2019, and each year thereafter.

*** Amounts can differ if all children are not in the spouse's or domestic partner's care.

Eligible Survivors

Spouse

A surviving spouse is a husband or wife who was legally married to the member at least one year before the member's death or before the occurrence of the injury or onset of the illness that resulted in the member's death.

A surviving spouse is entitled to the 1959 Survivor Benefit as long as they have care of an eligible child or are at least age 62 (age 60 at Level 4 and under the Indexed Level, or if contracted by your employer for Level 1, 2, or 3). A surviving spouse may remarry and continue to receive the allowance.

Domestic Partner

To be eligible, a surviving domestic partner must have been in a legally registered domestic partnership with the member at least one year before the member's death or before the occurrence of the injury or onset of the illness that resulted in the member's death. A surviving registered domestic partner is entitled to the 1959 Survivor Benefit as long as they have care of an eligible child or are at least age 62 (age 60 at Level 4 and under the Indexed Level, or if contracted by your employer for Level 1, 2, or 3.) A surviving registered domestic partner may register as a domestic partner to someone else and continue to receive the allowance.

Children

An unmarried child of the member or an unmarried stepchild (if the child was living with the member in a parent-child relationship) is eligible for benefits while under age 22. An unmarried child who is incapacitated because of a disability that began before attaining age 22 may be entitled to the benefit until married or the disability ends. If an unmarried child is in the care of a guardian or is living alone, the unmarried child's portion of the benefit is payable to the guardian or to the unmarried child directly, rather than to the surviving spouse.

Parents

A parent who is at least age 62 (age 60 for Level 4 and under the Indexed Level, or if contracted by your employer for Level 1, 2, or 3) may be eligible if there is no surviving spouse, registered domestic partner, or eligible children, and the parent(s) was dependent on the member for at least half of their support at the time of the member's death.

Special Death Benefit

If your death is the direct result of a violent act while you were performing your official duties, your surviving spouse, registered domestic partner, or unmarried children or eligible stepchildren under age 22 may receive a monthly allowance equal to one-half of your final compensation. If there are eligible surviving children in addition to your spouse or registered domestic partner, the allowance may be increased to a maximum of 75 percent. The Special Death Benefit is payable to your surviving spouse or registered domestic partner until death, or to your unmarried children until age 22. Talk to your employer to find out if they have contracted for this benefit.

HEALTH INSURANCE COVERED UNDER PEMHCA

If you are nearing retirement, read this section to gain an understanding of how retirement will affect your health benefits. Contact your health benefits officer or personnel office for questions about your health benefits.

Once you are retired, contact CalPERS for questions about your health benefits or to make changes to your plan or dependents.

You can obtain health benefits publications, required forms, and other information about your CalPERS health benefits through our website at www.calpers.ca.gov or by calling CalPERS at **888 CalPERS** (or **888-225-7377**).

- Our *Health Program Guide* describes CalPERS Basic health plan eligibility, enrollment, and choices. It provides an overview of CalPERS health plan types and tells you how and when you can make changes to your plan (including what forms and documentation you will need). It also describes how life changes or changes in your employment status can affect your benefits and eligibility.
- Our annual *Health Benefit Summary* provides valuable information to help you make an informed choice about your health plan and compare benefits, covered services, and co-payment information for all CalPERS health plans.
- Our *Medicare Enrollment Guide* provides information about how Medicare works with your CalPERS health benefits.

Your Separation Date and Your Retirement Date

As retirement approaches, two dates are particularly important: your separation date (last day of employment) and your retirement date. If you are not sure when these dates occur, talk to your employer. The following are your health plan enrollment options when you retire:

If your separation date and your retirement date are within 30 days of each other and you are enrolled in a CalPERS health plan at the time of retirement:

Your coverage will continue into retirement without a break. If you do not want your health benefits to continue into retirement, you have the option to cancel your coverage by:

- Submitting a *Health Benefits Plan Enrollment* form to your employer (if you are still employed)
- Declining health coverage in the CalPERS *Service Retirement Election Application*
- Writing or calling CalPERS to request to cancel health coverage (if you are retired)

PEMHCA

Public Employees' Medical and Hospital Care Act

Your Retirement Date

If the effective date of your retirement is more than 120 days after separation from employment, you are not eligible to be enrolled in a CalPERS health plan at retirement or at any future date.

If your separation date and your retirement date are between 31 and 120 days of each other, and you are enrolled in a CalPERS health plan at separation:

Your coverage will not automatically continue. You may re-enroll by either writing to the CalPERS Health Account Management Division within 60 days of your retirement date and requesting re-enrollment, or waiting for the next Open Enrollment period.

- You can pay monthly premiums directly to your health plan when you are not on a regular pay status.
- You can avoid having your coverage suspended between your last day of work and your retirement date by paying the full monthly premium.
- Contact the health benefits officer where you worked and complete a *Direct Payment Authorization* form within 30 days of your last day on pay status.

If you are eligible for CalPERS health benefits, but are not enrolled in a health plan at retirement and your retirement date is within 120 days of separation:

You may enroll within 60 days of retirement or during a future Open Enrollment period.

- Contact your health benefits officer if you are an active employee or the CalPERS Health Account Management Division if you are retired.

If your retirement effective date is more than 120 days after separation from employment:

You are not eligible for coverage at retirement or at any future date.

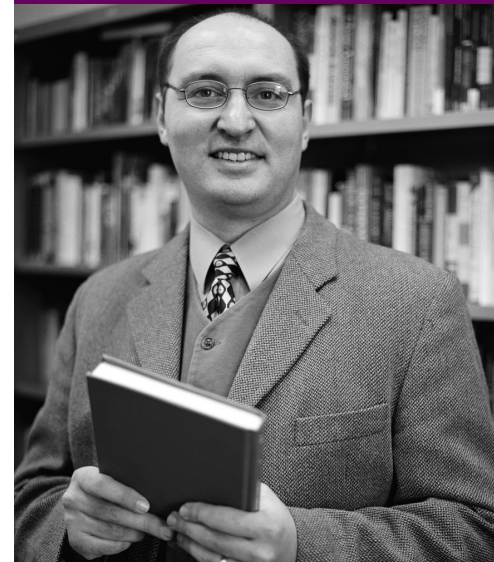
There are some exceptions to this rule. Contact CalPERS at **888 CalPERS** (or **888-225-7377**) if you have questions about your eligibility.

If you were covered as a dependent through another health plan when you retired:

You may be eligible to enroll in a CalPERS health plan. Contact CalPERS for more information.

If you have questions about your CalPERS health benefits and you are an active member:

Contact your personnel office or health benefits officer. If you are a retiree, contact CalPERS at **888 CalPERS** (or **888-225-7377**).



Medicare Health Plans

If you are retired and enrolled in a CalPERS health plan when you become eligible for Social Security Medicare benefits, state law prohibits your continued enrollment in a Basic plan. You can continue your CalPERS health care by enrolling in Medicare, providing your Medicare information to CalPERS, and then transferring to a CalPERS Medicare health plan.

Medicare

Medicare is a federal health insurance program for individuals:

- Age 65 or older
- Under age 65 with certain Social Security-qualified disabilities
- With End-Stage Renal Disease (ESRD)

Medicare is managed by the Centers for Medicare and Medicaid Services (CMS). The Social Security Administration (SSA) works with CMS to determine eligibility and to enroll individuals in Medicare.

Medicare consists of different parts:

- Part A (Hospital Insurance)
- Part B (Medical Insurance)
- Part C (Medicare Advantage Plans)
- Part D (Prescription Drug Coverage)

If you and/or your dependent are 65 or older, retired, enrolled in a CalPERS Basic health plan, and become Medicare eligible, you must enroll in Medicare Part A and Part B and transfer to a CalPERS Medicare health plan to continue CalPERS health coverage.

If you do not qualify for premium-free Part A based on your Social Security/ Medicare work record or the record of your current, former, or deceased spouse, you must provide supporting documentation from the SSA that you are not eligible for premium-free Part A to remain enrolled in a CalPERS Basic health plan. If you later qualify for Part A at no cost, you must enroll in Part A and Part B, provide your Medicare information to CalPERS, and then transfer to a CalPERS Medicare health plan.

If you are under age 65 and are Medicare eligible, you must provide your Medicare information to CalPERS and then transfer to a CalPERS Medicare health plan.

Although Part A may be at no cost to qualifying individuals, the SSA establishes a standard Part B premium. The monthly Part B premium must be paid to the SSA to remain enrolled in Part B. If your income exceeds established thresholds, the SSA will increase your Part B premium by an income-related monthly adjustment amount. Payment of the Part B premium is mandatory to protect your eligibility to remain enrolled in a CalPERS Medicare health plan. If you voluntarily terminate your enrollment in Part B, your CalPERS health coverage will be canceled.

CalPERS offers Medicare Advantage plans that include Part A, Part B, and Part D. You must remain enrolled in Part A, Part B, and Part D to continue your enrollment in a Medicare Advantage plan. If you voluntarily terminate your Medicare coverage, you will be disenrolled from the Medicare Advantage plan and canceled from CalPERS health coverage.

CalPERS participates in a Medicare Part D prescription drug plan. If you are a Medicare-eligible subscriber or dependent, you are automatically enrolled into an Employer Group Waiver Plan (EGWP). If you are enrolled in a Preferred Provider Organization (PPO) Supplement to Medicare plan, you may choose to opt out of the Part D prescription drug coverage; however, you will be financially responsible for all of your prescription drug costs. If you enroll in a non-CalPERS Medicare Part D plan, you are no longer eligible to remain enrolled in a CalPERS Medicare health plan. Consequently, you and all of your covered dependents will be canceled from CalPERS health coverage.

Medicare Part D standard premiums are paid to your health carrier as part of the CalPERS health premium. As with Medicare Part B, if your income exceeds established thresholds, the SSA will assess an additional income-related monthly adjustment amount. This amount must be paid to the SSA to protect your Medicare enrollment and eligibility to remain enrolled in a CalPERS Medicare health plan. If you do not pay the additional amount, you will be disenrolled from EGWP and be financially responsible for all of your prescription drug costs.

CalPERS offers several Medicare health plans. See the CalPERS *Medicare Enrollment Guide* for more detailed information or visit our website at www.calpers.ca.gov.

For information about the Medicare program, call Medicare at (800) 633-4227 or TTY (877) 486-2048, or visit their website at www.medicare.gov.

For information regarding Medicare eligibility and enrollment, or Medicare premiums, call the SSA at (800) 772-1213 or TTY (800) 325-0778 or visit their website at www.ssa.gov.

Making Changes to Your Health Plan After Retirement

Once you retire, CalPERS becomes your health benefits officer or personnel office. This means you can make most changes to your health enrollment by calling CalPERS at **888 CalPERS** (or **888-225-7377**). For some changes, we will ask you to send additional information to CalPERS.

If you prefer, you can correspond with us in writing. Please include your (or the member's) name, Social Security number or CalPERS ID, a copy of your Medicare card (if applicable), and daytime phone number with area code.

Disability

If you become eligible for Medicare due to a disability, special rules apply for you to continue your health benefits. Contact CalPERS for additional information.

Making Direct Payment for Health Premiums to Cover Delays

If you are aware of a delay in receiving your first retirement check, contact your personnel office to discuss making direct payments for your health premiums. The direct payments will ensure continuation of services and claim payments for your current PEMHCA coverage. You will be reimbursed for the direct payment amounts by the plan as soon as CalPERS makes the payments.

OTHER CONSIDERATIONS

Social Security and Your CalPERS Pension

If you worked for a federal, state, or local government where you did not pay Social Security taxes, the pension you receive from that agency could reduce your Social Security benefits. Two laws that may impact your Social Security benefits are the Government Pension Offset and the Windfall Elimination Provision. Visit the **Social Security & Your CalPERS Pension** page on our website at www.calpers.ca.gov to see the relationship between the two benefits. You can also contact the Social Security Administration at (800) 772-1213 or visit their website at www.ssa.gov.

Reciprocity— Other California Public Retirement Systems

CalPERS has an agreement with many public retirement systems in California that allows movement from one public employer to another, within a specified time limit, without losing valuable retirement rights and related benefits. This is called “reciprocity.”

There is no transfer of funds or service credit between retirement systems when you establish reciprocity. You become a member of both systems and are subject to the membership and benefit obligations and rights of each system.

You must retire from each system separately, but it must be on the same date for all the benefits of reciprocity to apply. Once you’ve retired, you will receive separate retirement checks from each system.

For more information or to establish reciprocity, refer to the CalPERS publication *A Guide to CalPERS When You Change Retirement Systems* (PUB 16).

Cost-of-Living Adjustments

Cost-of-living adjustments (COLA) are provided by law and are based on the Consumer Price Index (CPI) for all United States cities. You are eligible to receive your first COLA in the second calendar year after your retirement date. The adjustment is paid on the May 1 check and then every year thereafter.

Public agencies can contract for a maximum of 2, 3, 4, or 5 percent. The COLA percent your employer is contracted for gets compounded annually and is not a flat percentage paid each year. The amount you actually receive is the lower of either the compounded CPI or the compounded percentage. In years with a low rate of inflation, it’s possible the annual adjustment would result in less than a 1 percent increase to your retirement allowance. In these circumstances, the law states no adjustment will be made that year (Government Code section 21329).

Reciprocity

This agreement between retirement systems does not apply to health benefit vesting requirements.

If you work for other employers throughout your CalPERS career, such as the State of California or schools, those employers provide for a maximum of 2 percent COLA. If you have multiple employers with different contracted COLA percentages, we calculate the adjustment based on the contracted percentage for each of your employers, and then add them together.

Inflation Protection

Added protection against inflation is provided by the Purchasing Power Protection Account (PPPA), created to restore your monthly allowance to 80 percent of its original purchasing power.

You will automatically receive PPPA supplemental payments on a monthly basis if your allowance falls below the 80 percent purchasing power level. The additional allowance would start, and adjustments to the allowance would occur, in May of each year.

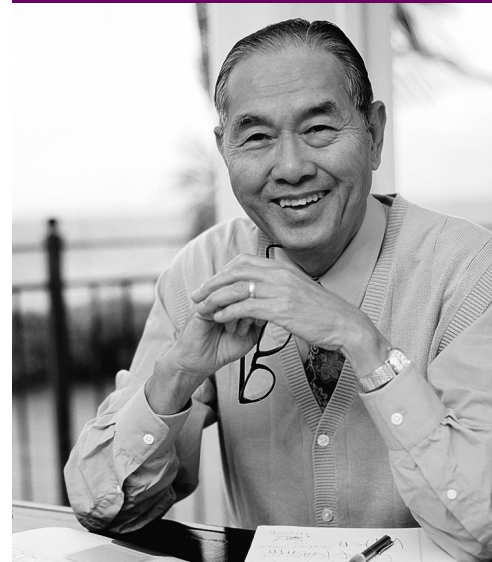
Sick Leave Credit

Talk to your employer to find out if they have contracted for this benefit.

At retirement, any unused sick leave you have may be converted to additional service credit. (The sick leave credit only increases your service credit, not your age.)

You will receive credit for unused sick leave as certified by your employer. It takes 250 days of sick leave to receive one year of service credit. For example, if your employer certified 120 days of sick leave, your additional service credit would be 0.480 ($120 \times 0.004 = 0.480$) of a year's service credit. If your employer submits this information prior to CalPERS processing your retirement application, we will include the additional service credit in your initial retirement benefit. Otherwise, we will adjust your account to reflect a change in service credit at the time your employer submits it.

To receive sick leave credit, your employer must contract for this benefit. If it is contracted, your retirement date must be within 120 days of the date of separation from employment. Your employer will divide your unused hours of sick leave by **eight** to determine the number of days to report to CalPERS.



Internal Revenue Code (IRC) Section 401(a)(17) Contribution and Salary Limit

If you first became a member of CalPERS on or after July 1, 1996, IRC section 401(a)(17) places limits on the amount of member contributions you can pay into CalPERS, a tax-qualified pension plan. This section applies to annual salaries (earnings) that exceed \$250,000. The actual dollar limit is set each year by the Internal Revenue Service. This section does not limit or place a cap on the salary an employer can pay an employee. It does specify the highest salary on which member contributions can be paid into an employee's CalPERS account. Your employer is responsible for monitoring when your salary reaches or exceeds this annual limit and for refunding any excess contributions. Each year CalPERS issues a Circular Letter to all employers announcing the IRC section 401(a)(17) limit for the calendar year.

At retirement, your highest average salary (final compensation amount) used to calculate your benefit will be the IRC section 401(a)(17) salary limit for that year. For example, if you became a member of CalPERS in August 1996, your annual salary is \$300,000, and the section 401(a)(17) limit in the year you retire is \$250,000, you will pay contributions on \$250,000 of your salary and your retirement benefit calculation would use \$250,000 as your highest final compensation, if your compensation period is 12 months. If your compensation period is 36 months, your final compensation will be subject to the section 401(a)(17) limit in effect for each of those calendar years.

Internal Revenue Code (IRC) Section 415(b) Retirement Benefit Limit

IRC section 415(b) places a dollar limit on the annual retirement benefit you can receive from CalPERS, a tax-qualified pension plan. This limit generally applies to retirement benefits of approximately \$215,000 or more a year for employees retiring at their Social Security normal retirement age of 62 through 65. **Note:** The determination of whether your retirement benefit will be subject to this limit can only be made at retirement.

This dollar limit is set each year by the Internal Revenue Service and is adjusted for several factors including inflation, age at retirement, and after-tax contributions. If your retirement benefit must be limited under IRC section 415(b), you will be enrolled in the IRC section 415(b) Replacement Benefit Plan, an employer-funded plan, if eligible.

The CalPERS Replacement Benefit Plan provides a replacement benefit that will, to the extent possible, make up the amount your CalPERS benefit is limited, and is only available if your membership date is prior to January 1, 2013.

For additional information, see the IRC section 415(b) Replacement Benefit Plan Fact Sheet on our website at www.calpers.ca.gov.

Divorce or Termination of Domestic Partnership

In California, all types of retirement benefits are considered community property. Your CalPERS pension is subject to division upon dissolution of a marriage or registered domestic partnership, or a legal separation. If you have a community property claim on your retirement account, we recommend that you resolve the claim before you retire to avoid possible delays in processing your retirement benefits. For more information, review the publication *A Guide to CalPERS Community Property* (PUB 38A).

Power of Attorney

A CalPERS special power of attorney allows you to designate a representative or agent, known as your attorney-in-fact, to conduct your retirement affairs. Should you become unable to act on your own behalf, your designated attorney-in-fact will be able to perform important duties concerning your CalPERS business, such as address changes, federal or state tax withholding elections, and retirement benefit elections.

The CalPERS special power of attorney is specifically designed for use by active and retired CalPERS members and beneficiaries. You may already have a power of attorney set up through another resource; however, it may not address your CalPERS retirement benefits. For more information, review the publication *CalPERS Special Power of Attorney* (PUB 30).

Benefit Forfeiture for Felony Convictions

Under the California Public Employees' Pension Reform Act of 2013, if you are convicted of a felony by a state or federal trial court in connection with your official job duties, you will forfeit all of your accrued rights and benefits from the commission of the felony forward and you will no longer be eligible to accrue further benefits with CalPERS, effective on the date of conviction (Government Code sections 7522.72 and 7522.74).

If you are convicted for such a crime, you and the prosecuting agency must notify your employer within 60 days of your conviction, and your employer must notify CalPERS within 90 days of your conviction.

CalPERS will remove the service credit and return any contributions you made during the forfeiture period, without interest. If after the removal of forfeited service and contributions you remain vested for retirement, you may apply for retirement once you reach minimum retirement age. If after the removal of forfeited service you are not vested for retirement, you may elect a refund of your remaining member contributions.

Should your conviction be overturned, your forfeited service will be restored to your account if you elect to redeposit the returned contributions, with interest.



RETIREMENT FORMULAS AND BENEFIT FACTORS

The chart below shows how the benefit factor increases for each quarter year of age from 50 to 63.

2% at 55 Benefit Formula				
Minimum Age for Retirement 50				
Age	Exact Year	¼ Year	½ Year	¾ Year
50	1.426%	1.450%	1.474%	1.498%
51	1.522%	1.550%	1.576%	1.602%
52	1.628%	1.656%	1.686%	1.714%
53	1.742%	1.772%	1.804%	1.834%
54	1.866%	1.900%	1.932%	1.966%
55	2.000%	2.014%	2.026%	2.040%
56	2.052%	2.066%	2.078%	2.092%
57	2.104%	2.118%	2.130%	2.144%
58	2.156%	2.170%	2.182%	2.196%
59	2.210%	2.222%	2.236%	2.248%
60	2.262%	2.274%	2.288%	2.300%
61	2.314%	2.326%	2.340%	2.352%
62	2.366%	2.378%	2.392%	2.404%
63 or older	2.418%	—	—	—

PERCENTAGE OF FINAL COMPENSATION



Age	50	51	52	53	54	55	56	57	58	59	60	61	62	63+
Benefit Factor	1.426	1.522	1.628	1.742	1.866	2.000	2.052	2.104	2.156	2.210	2.262	2.314	2.366	2.418
Years of Service	Percentage of Final Compensation													
5	7.13	7.61	8.14	8.71	9.33	10.00	10.26	10.52	10.78	11.05	11.31	11.57	11.83	12.09
6	8.56	9.13	9.77	10.45	11.20	12.00	12.31	12.62	12.94	13.26	13.57	13.88	14.20	14.51
7	9.98	10.65	11.40	12.19	13.06	14.00	14.36	14.73	15.09	15.47	15.83	16.20	16.56	16.93
8	11.41	12.18	13.02	13.94	14.93	16.00	16.42	16.83	17.25	17.68	18.10	18.51	18.93	19.34
9	12.83	13.70	14.65	15.68	16.79	18.00	18.47	18.94	19.40	19.89	20.36	20.83	21.29	21.76
10	14.26	15.22	16.28	17.42	18.66	20.00	20.52	21.04	21.56	22.10	22.62	23.14	23.66	24.18
11	15.69	16.74	17.91	19.16	20.53	22.00	22.57	23.14	23.72	24.31	24.88	25.45	26.03	26.60
12	17.11	18.26	19.54	20.90	22.39	24.00	24.62	25.25	25.87	26.52	27.14	27.77	28.39	29.02
13	18.54	19.79	21.16	22.65	24.26	26.00	26.68	27.35	28.03	28.73	29.41	30.08	30.76	31.43
14	19.96	21.31	22.79	24.39	26.12	28.00	28.73	29.46	30.18	30.94	31.67	32.40	33.12	33.85
15	21.39	22.83	24.42	26.13	27.99	30.00	30.78	31.56	32.34	33.15	33.93	34.71	35.49	36.27
16	22.82	24.35	26.05	27.87	29.86	32.00	32.83	33.66	34.50	35.36	36.19	37.02	37.86	38.69
17	24.24	25.87	27.68	29.61	31.72	34.00	34.88	35.77	36.65	37.57	38.45	39.34	40.22	41.11
18	25.67	27.40	29.30	31.36	33.59	36.00	36.94	37.87	38.81	39.78	40.72	41.65	42.59	43.52
19	27.09	28.92	30.93	33.10	35.45	38.00	38.99	39.98	40.96	41.99	42.98	43.97	44.95	45.94
20	28.52	30.44	32.56	34.84	37.32	40.00	41.04	42.08	43.12	44.20	45.24	46.28	47.32	48.36
21	29.95	31.96	34.19	36.58	39.19	42.00	43.09	44.18	45.28	46.41	47.50	48.59	49.69	50.78
22	31.37	33.48	35.82	38.32	41.05	44.00	45.14	46.29	47.43	48.62	49.76	50.91	52.05	53.20
23	32.80	35.01	37.44	40.07	42.92	46.00	47.20	48.39	49.59	50.83	52.03	53.22	54.42	55.61
24	34.22	36.53	39.07	41.81	44.78	48.00	49.25	50.50	51.74	53.04	54.29	55.54	56.78	58.03
25	35.65	38.05	40.70	43.55	46.65	50.00	51.30	52.60	53.90	55.25	56.55	57.85	59.15	60.45
26	37.08	39.57	42.33	45.29	48.52	52.00	53.35	54.70	56.06	57.46	58.81	60.16	61.52	62.87
27	38.50	41.09	43.96	47.03	50.38	54.00	55.40	56.81	58.21	59.67	61.07	62.48	63.88	65.29
28	39.93	42.62	45.58	48.78	52.25	56.00	57.46	58.91	60.37	61.88	63.34	64.79	66.25	67.70
29	41.35	44.14	47.21	50.52	54.11	58.00	59.51	61.02	62.52	64.09	65.60	67.11	68.61	70.12
30	42.78	45.66	48.84	52.26	55.98	60.00	61.56	63.12	64.68	66.30	67.86	69.42	70.98	72.54
31	44.21	47.18	50.47	54.00	57.85	62.00	63.61	65.22	66.84	68.51	70.12	71.73	73.35	74.96
32	45.63	48.70	52.10	55.74	59.71	64.00	65.66	67.33	68.99	70.72	72.38	74.05	75.71	77.38
33	47.06	50.23	53.72	57.49	61.58	66.00	67.72	69.43	71.15	72.93	74.65	76.36	78.08	79.79
34	—	51.75	55.35	59.23	63.44	68.00	69.77	71.54	73.30	75.14	76.91	78.68	80.44	82.21
35	—	—	56.98	60.97	65.31	70.00	71.82	73.64	75.46	77.35	79.17	80.99	82.81	84.63
36	—	—	—	62.71	67.18	72.00	73.87	75.74	77.62	79.56	81.43	83.30	85.18	87.05
37	—	—	—	—	69.04	74.00	75.92	77.85	79.77	81.77	83.69	85.62	87.54	89.47
38	—	—	—	—	—	76.00	77.98	79.95	81.93	83.98	85.96	87.93	89.91	91.88
39	—	—	—	—	—	—	80.03	82.06	84.08	86.19	88.22	90.25	92.27	94.30
40	—	—	—	—	—	—	—	84.16	86.24	88.40	90.48	92.56	94.64	96.72

RETIREMENT FORMULAS AND BENEFIT FACTORS

The chart below shows how the benefit factor increases for each quarter year of age from 50 to 63.

2% at 60 Benefit Formula				
Minimum Age for Retirement 50				
Age	Exact Year	¼ Year	½ Year	¾ Year
50	1.092%	1.108%	1.124%	1.140%
51	1.156%	1.172%	1.190%	1.206%
52	1.224%	1.242%	1.260%	1.278%
53	1.296%	1.316%	1.336%	1.356%
54	1.376%	1.396%	1.418%	1.438%
55	1.460%	1.482%	1.506%	1.528%
56	1.552%	1.576%	1.600%	1.626%
57	1.650%	1.678%	1.704%	1.730%
58	1.758%	1.786%	1.816%	1.846%
59	1.874%	1.906%	1.938%	1.970%
60	2.000%	2.034%	2.068%	2.100%
61	2.134%	2.168%	2.202%	2.238%
62	2.272%	2.308%	2.346%	2.382%
63 or older	2.418%	—	—	—

PERCENTAGE OF FINAL COMPENSATION



Age	50	51	52	53	54	55	56	57	58	59	60	61	62	63+
Benefit Factor	1.092	1.156	1.224	1.296	1.376	1.460	1.552	1.650	1.758	1.874	2.000	2.134	2.272	2.418
Years of Service	Percentage of Final Compensation													
5	5.46	5.78	6.12	6.48	6.88	7.30	7.76	8.25	8.79	9.37	10.00	10.67	11.36	12.09
6	6.55	6.94	7.34	7.78	8.26	8.76	9.31	9.90	10.55	11.24	12.00	12.80	13.63	14.51
7	7.64	8.09	8.57	9.07	9.63	10.22	10.86	11.55	12.31	13.12	14.00	14.94	15.90	16.93
8	8.74	9.25	9.79	10.37	11.01	11.68	12.42	13.20	14.06	14.99	16.00	17.07	18.18	19.34
9	9.83	10.40	11.02	11.66	12.38	13.14	13.97	14.85	15.82	16.87	18.00	19.21	20.45	21.76
10	10.92	11.56	12.24	12.96	13.76	14.60	15.52	16.50	17.58	18.74	20.00	21.34	22.72	24.18
11	12.01	12.72	13.46	14.26	15.14	16.06	17.07	18.15	19.34	20.61	22.00	23.47	24.99	26.60
12	13.10	13.87	14.69	15.55	16.51	17.52	18.62	19.80	21.10	22.49	24.00	25.61	27.26	29.02
13	14.20	15.03	15.91	16.85	17.89	18.98	20.18	21.45	22.85	24.36	26.00	27.74	29.54	31.43
14	15.29	16.18	17.14	18.14	19.26	20.44	21.73	23.10	24.61	26.24	28.00	29.88	31.81	33.85
15	16.38	17.34	18.36	19.44	20.64	21.90	23.28	24.75	26.37	28.11	30.00	32.01	34.08	36.27
16	17.47	18.50	19.58	20.74	22.02	23.36	24.83	26.40	28.13	29.98	32.00	34.14	36.35	38.69
17	18.56	19.65	20.81	22.03	23.39	24.82	26.38	28.05	29.89	31.85	34.00	36.28	38.62	41.11
18	19.66	20.81	22.03	23.33	24.77	26.28	27.94	29.70	31.64	33.73	36.00	38.41	40.90	43.52
19	20.75	21.96	23.26	24.62	26.14	27.74	29.49	31.35	33.40	35.61	38.00	40.55	43.17	45.94
20	21.84	23.12	24.48	25.92	27.52	29.20	31.04	33.00	35.16	37.48	40.00	42.68	45.44	48.36
21	22.93	24.28	25.70	27.22	28.90	30.66	32.59	34.65	36.92	39.35	42.00	44.81	47.71	50.78
22	24.02	25.43	26.93	28.51	30.27	32.12	34.14	36.30	38.68	41.23	44.00	46.95	49.98	53.20
23	25.12	26.59	28.15	29.81	31.65	33.58	35.70	37.95	40.43	43.10	46.00	49.08	52.26	55.61
24	26.21	27.74	29.38	31.10	33.02	35.04	37.25	39.60	42.19	44.98	48.00	51.22	54.53	58.03
25	27.30	28.90	30.60	32.40	34.40	36.50	38.80	41.25	43.95	46.85	50.00	53.35	56.80	60.45
26	28.39	30.06	31.82	33.70	35.78	37.96	40.35	42.90	45.71	48.72	52.00	55.48	59.07	62.87
27	29.48	31.21	33.05	34.99	37.15	39.42	41.90	44.55	47.47	50.60	54.00	57.62	61.34	65.29
28	30.58	32.37	34.27	36.29	38.53	40.88	43.46	46.20	49.22	52.47	56.00	59.75	63.62	67.70
29	31.67	33.52	35.50	37.58	39.90	42.34	45.01	47.85	50.98	54.35	58.00	61.89	65.89	70.12
30	32.76	34.68	36.72	38.88	41.28	43.80	46.56	49.50	52.74	56.22	60.00	64.02	68.16	72.54
31	33.85	35.84	37.94	40.18	42.66	45.26	48.11	51.15	54.50	58.09	62.00	66.15	70.43	74.96
32	34.94	36.99	39.17	41.47	44.03	46.72	49.66	52.80	56.26	59.97	64.00	68.29	72.70	77.38
33	36.04	38.15	40.39	42.77	45.41	48.18	51.22	54.45	58.01	61.84	66.00	70.42	74.98	79.79
34	—	39.30	41.62	44.06	46.78	49.64	52.77	56.10	59.77	63.72	68.00	72.56	77.25	82.21
35	—	—	42.84	45.36	48.16	51.10	54.32	57.75	61.53	65.59	70.00	74.69	79.52	84.63
36	—	—	—	46.66	49.54	52.56	55.87	59.40	63.29	67.46	72.00	76.82	81.79	87.05
37	—	—	—	—	50.91	54.02	57.42	61.05	65.05	69.34	74.00	78.96	84.06	89.47
38	—	—	—	—	—	55.48	58.98	62.70	66.80	71.21	76.00	81.09	86.34	91.88
39	—	—	—	—	—	—	60.53	64.35	68.56	73.09	78.00	83.23	88.61	94.30
40	—	—	—	—	—	—	—	66.00	70.32	74.96	80.00	85.36	90.88	96.72

RETIREMENT FORMULAS AND BENEFIT FACTORS

The chart below shows how the benefit factor increases for each quarter year of age from 52 to 67.

2% at 62 Benefit Formula				
Minimum Age for Retirement 52				
Membership Date on or After January 1, 2013				
Age	Exact Year	¼ Year	½ Year	¾ Year
52	1.000%	1.025%	1.050%	1.075%
53	1.100%	1.125%	1.150%	1.175%
54	1.200%	1.225%	1.250%	1.275%
55	1.300%	1.325%	1.350%	1.375%
56	1.400%	1.425%	1.450%	1.475%
57	1.500%	1.525%	1.550%	1.575%
58	1.600%	1.625%	1.650%	1.675%
59	1.700%	1.725%	1.750%	1.775%
60	1.800%	1.825%	1.850%	1.875%
61	1.900%	1.925%	1.950%	1.975%
62	2.000%	2.025%	2.050%	2.075%
63	2.100%	2.125%	2.150%	2.175%
64	2.200%	2.225%	2.250%	2.275%
65	2.300%	2.325%	2.350%	2.375%
66	2.400%	2.425%	2.450%	2.475%
67 or older	2.500%	2.500%	2.500%	2.500%

PERCENTAGE OF FINAL COMPENSATION



Age	52	53	54	55	56	57	58	59	60	61	62	63	64	65	66	67+
Benefit Factor	1.000	1.100	1.200	1.300	1.400	1.500	1.600	1.700	1.800	1.900	2.000	2.100	2.200	2.300	2.400	2.500
Years of Service	Percentage of Final Compensation															
5	5.00	5.50	6.00	6.50	7.00	7.50	8.00	8.50	9.00	9.50	10.00	10.50	11.00	11.50	12.00	12.50
6	6.00	6.60	7.20	7.80	8.40	9.00	9.60	10.20	10.80	11.40	12.00	12.60	13.20	13.80	14.40	15.00
7	7.00	7.70	8.40	9.10	9.80	10.50	11.20	11.90	12.60	13.30	14.00	14.70	15.40	16.10	16.80	17.50
8	8.00	8.80	9.60	10.40	11.20	12.00	12.80	13.60	14.40	15.20	16.00	16.80	17.60	18.40	19.20	20.00
9	9.00	9.90	10.80	11.70	12.60	13.50	14.40	15.30	16.20	17.10	18.00	18.90	19.80	20.70	21.60	22.50
10	10.00	11.00	12.00	13.00	14.00	15.00	16.00	17.00	18.00	19.00	20.00	21.00	22.00	23.00	24.00	25.00
11	11.00	12.10	13.20	14.30	15.40	16.50	17.60	18.70	19.80	20.90	22.00	23.10	24.20	25.30	26.40	27.50
12	12.00	13.20	14.40	15.60	16.80	18.00	19.20	20.40	21.60	22.80	24.00	25.20	26.40	27.60	28.80	30.00
13	13.00	14.30	15.60	16.90	18.20	19.50	20.80	22.10	23.40	24.70	26.00	27.30	28.60	29.90	31.20	32.50
14	14.00	15.40	16.80	18.20	19.60	21.00	22.40	23.80	25.20	26.60	28.00	29.40	30.80	32.20	33.60	35.00
15	15.00	16.50	18.00	19.50	21.00	22.50	24.00	25.50	27.00	28.50	30.00	31.50	33.00	34.50	36.00	37.50
16	16.00	17.60	19.20	20.80	22.40	24.00	25.60	27.20	28.80	30.40	32.00	33.60	35.20	36.80	38.40	40.00
17	17.00	18.70	20.40	22.10	23.80	25.50	27.20	28.90	30.60	32.30	34.00	35.70	37.40	39.10	40.80	42.50
18	18.00	19.80	21.60	23.40	25.20	27.00	28.80	30.60	32.40	34.20	36.00	37.80	39.60	41.40	43.20	45.00
19	19.00	20.90	22.80	24.70	26.60	28.50	30.40	32.30	34.20	36.10	38.00	39.90	41.80	43.70	45.60	47.50
20	20.00	22.00	24.00	26.00	28.00	30.00	32.00	34.00	36.00	38.00	40.00	42.00	44.00	46.00	48.00	50.00
21	21.00	23.10	25.20	27.30	29.40	31.50	33.60	35.70	37.80	39.90	42.00	44.10	46.20	48.30	50.40	52.50
22	22.00	24.20	26.40	28.60	30.80	33.00	35.20	37.40	39.60	41.80	44.00	46.20	48.40	50.60	52.80	55.00
23	23.00	25.30	27.60	29.90	32.20	34.50	36.80	39.10	41.40	43.70	46.00	48.30	50.60	52.90	55.20	57.50
24	24.00	26.40	28.80	31.20	33.60	36.00	38.40	40.80	43.20	45.60	48.00	50.40	52.80	55.20	57.60	60.00
25	25.00	27.50	30.00	32.50	35.00	37.50	40.00	42.50	45.00	47.50	50.00	52.50	55.00	57.50	60.00	62.50
26	26.00	28.60	31.20	33.80	36.40	39.00	41.60	44.20	46.80	49.40	52.00	54.60	57.20	59.80	62.40	65.00
27	27.00	29.70	32.40	35.10	37.80	40.50	43.20	45.90	48.60	51.30	54.00	56.70	59.40	62.10	64.80	67.50
28	28.00	30.80	33.60	36.40	39.20	42.00	44.80	47.60	50.40	53.20	56.00	58.80	61.60	64.40	67.20	70.00
29	29.00	31.90	34.80	37.70	40.60	43.50	46.40	49.30	52.20	55.10	58.00	60.90	63.80	66.70	69.60	72.50
30	30.00	33.00	36.00	39.00	42.00	45.00	48.00	51.00	54.00	57.00	60.00	63.00	66.00	69.00	72.00	75.00
31	31.00	34.10	37.20	40.30	43.40	46.50	49.60	52.70	55.80	58.90	62.00	65.10	68.20	71.30	74.40	77.50
32	32.00	35.20	38.40	41.60	44.80	48.00	51.20	54.40	57.60	60.80	64.00	67.20	70.40	73.60	76.80	80.00
33	33.00	36.30	39.60	42.90	46.20	49.50	52.80	56.10	59.40	62.70	66.00	69.30	72.60	75.90	79.20	82.50
34	34.00	37.40	40.80	44.20	47.60	51.00	54.40	57.80	61.20	64.60	68.00	71.40	74.80	78.20	81.60	85.00
35	35.00	38.50	42.00	45.50	49.00	52.50	56.00	59.50	63.00	66.50	70.00	73.50	77.00	80.50	84.00	87.50
36	36.00	39.60	43.20	46.80	50.40	54.00	57.60	61.20	64.80	68.40	72.00	75.60	79.20	82.80	86.40	90.00
37	37.00	40.70	44.40	48.10	51.80	55.50	59.20	62.90	66.60	70.30	74.00	77.70	81.40	85.10	88.80	92.50
38	38.00	41.80	45.60	49.40	53.20	57.00	60.80	64.60	68.40	72.20	76.00	79.80	83.60	87.40	91.20	95.00
39	39.00	42.90	46.80	50.70	54.60	58.50	62.40	66.30	70.20	74.10	78.00	81.90	85.80	89.70	93.60	97.50
40	40.00	44.00	48.00	52.00	56.00	60.00	64.00	68.00	72.00	76.00	80.00	84.00	88.00	92.00	96.00	100.00



RETIREMENT FORMULAS AND BENEFIT FACTORS

The chart below shows how the benefit factor increases for each quarter year of age from 50 to 55.

2.5% at 55 Benefit Formula				
Minimum Age for Retirement 50				
Age	Exact Year	¼ Year	½ Year	¾ Year
50	2.000%	2.025%	2.050%	2.075%
51	2.100%	2.125%	2.150%	2.175%
52	2.200%	2.225%	2.250%	2.275%
53	2.300%	2.325%	2.350%	2.375%
54	2.400%	2.425%	2.450%	2.475%
55 or older	2.500%	—	—	—

PERCENTAGE OF FINAL COMPENSATION



Age	50	51	52	53	54	55+
Benefit Factor	2.000	2.100	2.200	2.300	2.400	2.500
Years of Service	Percentage of Final Compensation					
5	10.00	10.50	11.00	11.50	12.00	12.50
6	12.00	12.60	13.20	13.80	14.40	15.00
7	14.00	14.70	15.40	16.10	16.80	17.50
8	16.00	16.80	17.60	18.40	19.20	20.00
9	18.00	18.90	19.80	20.70	21.60	22.50
10	20.00	21.00	22.00	23.00	24.00	25.00
11	22.00	23.10	24.20	25.30	26.40	27.50
12	24.00	25.20	26.40	27.60	28.80	30.00
13	26.00	27.30	28.60	29.90	31.20	32.50
14	28.00	29.40	30.80	32.20	33.60	35.00
15	30.00	31.50	33.00	34.50	36.00	37.50
16	32.00	33.60	35.20	36.80	38.40	40.00
17	34.00	35.70	37.40	39.10	40.80	42.50
18	36.00	37.80	39.60	41.40	43.20	45.00
19	38.00	39.90	41.80	43.70	45.60	47.50
20	40.00	42.00	44.00	46.00	48.00	50.00
21	42.00	44.10	46.20	48.30	50.40	52.50
22	44.00	46.20	48.40	50.60	52.80	55.00
23	46.00	48.30	50.60	52.90	55.20	57.50
24	48.00	50.40	52.80	55.20	57.60	60.00
25	50.00	52.50	55.00	57.50	60.00	62.50
26	52.00	54.60	57.20	59.80	62.40	65.00
27	54.00	56.70	59.40	62.10	64.80	67.50
28	56.00	58.80	61.60	64.40	67.20	70.00
29	58.00	60.90	63.80	66.70	69.60	72.50
30	60.00	63.00	66.00	69.00	72.00	75.00
31	62.00	65.10	68.20	71.30	74.40	77.50
32	64.00	67.20	70.40	73.60	76.80	80.00
33	66.00	69.30	72.60	75.90	79.20	82.50
34	—	71.40	74.80	78.20	81.60	85.00
35	—	—	77.70	80.50	84.00	87.50
36	—	—	—	82.80	86.40	90.00
37	—	—	—	—	88.80	92.50
38	—	—	—	—	—	95.00

RETIREMENT FORMULAS AND BENEFIT FACTORS

The chart below shows how the benefit factor increases for each quarter year of age from 50 to 55.

2.7% at 55 Benefit Formula				
Minimum Age for Retirement 50				
Age at Retirement	Exact Year	¼ Year	½ Year	¾ Year
50	2.000%	2.035%	2.070%	2.105%
51	2.140%	2.175%	2.210%	2.245%
52	2.280%	2.315%	2.350%	2.385%
53	2.420%	2.455%	2.490%	2.525%
54	2.560%	2.595%	2.630%	2.665%
55+	2.700%	—	—	—

PERCENTAGE OF FINAL COMPENSATION

2.7^{percent}
@55

Age	50	51	52	53	54	55+
Benefit Factor	2.000	2.140	2.280	2.420	2.560	2.700
Years of Service	Percentage of Final Compensation					
5	10.00	10.70	11.40	12.10	12.80	13.50
6	12.00	12.84	13.68	14.52	15.36	16.20
7	14.00	14.98	15.96	16.94	17.92	18.90
8	16.00	17.12	18.24	19.36	20.48	21.60
9	18.00	19.26	20.52	21.78	23.04	24.30
10	20.00	21.40	22.80	24.20	25.60	27.00
11	22.00	23.54	25.08	26.62	28.16	29.70
12	24.00	25.68	27.36	29.04	30.72	32.40
13	26.00	27.82	29.64	31.46	33.28	35.10
14	28.00	29.96	31.92	33.88	35.84	37.80
15	30.00	32.10	34.20	36.30	38.40	40.50
16	32.00	34.24	36.48	38.72	40.96	43.20
17	34.00	36.38	38.76	41.14	43.52	45.90
18	36.00	38.52	41.04	43.56	46.08	48.60
19	38.00	40.66	43.32	45.98	48.64	51.30
20	40.00	42.80	45.60	48.40	51.20	54.00
21	42.00	44.94	47.88	50.82	53.76	56.70
22	44.00	47.08	50.16	53.24	56.32	59.40
23	46.00	49.22	52.44	55.66	58.88	62.10
24	48.00	51.36	54.72	58.08	61.44	64.80
25	50.00	53.50	57.00	60.50	64.00	67.50
26	52.00	55.64	59.28	62.92	66.56	70.20
27	54.00	57.78	61.56	65.34	69.12	72.90
28	56.00	59.92	63.84	67.76	71.68	75.60
29	58.00	62.06	66.12	70.18	74.24	78.30
30	60.00	64.20	68.40	72.60	76.80	81.00
31	62.00	66.34	70.68	75.02	79.36	83.70
32	64.00	68.48	72.96	77.44	81.92	86.40
33	66.00	70.62	75.24	79.86	84.48	89.10
34	—	72.76	77.52	82.28	87.04	91.80
35	—	—	79.80	84.70	89.60	94.50
36	—	—	—	87.12	92.16	97.20
37	—	—	—	—	94.72	99.90
38	—	—	—	—	—	102.60

RETIREMENT FORMULAS AND BENEFIT FACTORS

The chart below shows how the benefit factor increases for each quarter year of age from 50 to 60.

3% at 60 Benefit Formula				
Minimum Age for Retirement 50				
Age at Retirement	Exact Year	¼ Year	½ Year	¾ Year
50	2.000%	2.025%	2.050%	2.075%
51	2.100%	2.125%	2.150%	2.175%
52	2.200%	2.225%	2.250%	2.275%
53	2.300%	2.325%	2.350%	2.375%
54	2.400%	2.425%	2.450%	2.475%
55	2.500%	2.525%	2.550%	2.575%
56	2.600%	2.625%	2.650%	2.675%
57	2.700%	2.725%	2.750%	2.775%
58	2.800%	2.825%	2.850%	2.875%
59	2.900%	2.925%	2.950%	2.975%
60 or older	3.000%	—	—	—

PERCENTAGE OF FINAL COMPENSATION



Age	50	51	52	53	54	55	56	57	58	59	60
Benefit Factor	2.000	2.100	2.200	2.300	2.400	2.500	2.600	2.700	2.800	2.900	3.000
Years of Service	Percentage of Final Compensation										
5	10.00	10.50	11.00	11.50	12.00	12.50	13.00	13.50	14.00	14.50	15.00
6	12.00	12.60	13.20	13.80	14.40	15.00	15.60	16.20	16.80	17.40	18.00
7	14.00	14.70	15.40	16.10	16.80	17.50	18.20	18.90	19.60	20.30	21.00
8	16.00	16.80	17.60	18.40	19.20	20.00	20.80	21.60	22.40	23.20	24.00
9	18.00	18.90	19.80	20.70	21.60	22.50	23.40	24.30	25.20	26.10	27.00
10	20.00	21.00	22.00	23.00	24.00	25.00	26.00	27.00	28.00	29.00	30.00
11	22.00	23.10	24.20	25.30	26.40	27.50	28.60	29.70	30.80	31.90	33.00
12	24.00	25.20	26.40	27.60	28.80	30.00	31.20	32.40	33.60	34.80	36.00
13	26.00	27.30	28.60	29.90	31.20	32.50	33.80	35.10	36.40	37.70	39.00
14	28.00	29.40	30.80	32.20	33.60	35.00	36.40	37.80	39.20	40.60	42.00
15	30.00	31.50	33.00	34.50	36.00	37.50	39.00	40.50	42.00	43.50	45.00
16	32.00	33.60	35.20	36.80	38.40	40.00	41.60	43.20	44.80	46.40	48.00
17	34.00	35.70	37.40	39.10	40.80	42.50	44.20	45.90	47.60	49.30	51.00
18	36.00	37.80	39.60	41.40	43.20	45.00	46.80	48.60	50.40	52.20	54.00
19	38.00	39.90	41.80	43.70	45.60	47.50	49.40	51.30	53.20	55.10	57.00
20	40.00	42.00	44.00	46.00	48.00	50.00	52.00	54.00	56.00	58.00	60.00
21	42.00	44.10	46.20	48.30	50.40	52.50	54.60	56.70	58.80	60.90	63.00
22	44.00	46.20	48.40	50.60	52.80	55.00	57.20	59.40	61.60	63.80	66.00
23	46.00	48.30	50.60	52.90	55.20	57.50	59.80	62.10	64.40	66.70	69.00
24	48.00	50.40	52.80	55.20	57.60	60.00	62.40	64.80	67.20	69.60	72.00
25	50.00	52.50	55.00	57.50	60.00	62.50	65.00	67.50	70.00	72.50	75.00
26	52.00	54.60	57.20	59.80	62.40	65.00	67.60	70.20	72.80	75.40	78.00
27	54.00	56.70	59.40	62.10	64.80	67.50	70.20	72.90	75.60	78.30	81.00
28	56.00	58.80	61.60	64.40	67.20	70.00	72.80	75.60	78.40	81.20	84.00
29	58.00	60.90	63.80	66.70	69.60	72.50	75.40	78.30	81.20	84.10	87.00
30	60.00	63.00	66.00	69.00	72.00	75.00	78.00	81.00	84.00	87.00	90.00
31	62.00	65.10	68.20	71.30	74.40	77.50	80.60	83.70	86.80	89.90	93.00
32	64.00	67.20	70.40	73.60	76.80	80.00	83.20	86.40	89.60	92.80	96.00
33	66.00	69.30	72.60	75.90	79.20	82.50	85.80	89.10	92.40	95.70	99.00
34	—	71.40	74.80	78.20	81.60	85.00	88.40	91.80	95.20	98.60	102.00
35	—	—	77.00	80.50	84.00	87.50	91.00	94.50	98.00	101.50	105.00
36	—	—	—	82.80	86.40	90.00	93.60	97.20	100.80	104.40	108.00
37	—	—	—	—	88.80	92.50	96.20	99.90	103.60	107.30	111.00
38	—	—	—	—	—	95.00	98.80	102.60	106.40	110.20	114.00
39	—	—	—	—	—	—	101.40	105.30	109.20	113.10	117.00
40	—	—	—	—	—	—	—	108.00	112.00	116.00	120.00

BECOME A MORE INFORMED MEMBER

CalPERS Website

Visit www.calpers.ca.gov for information on all our benefits and services.

my|CalPERS

Log in at my.calpers.ca.gov to access real-time details and balances of your CalPERS accounts. With my|CalPERS you can:






- View, print, and save current and past statements.
- Select mailing preferences for your statements, newsletters, and retirement checks.
- Search for medical premium rates and health plans available in your area and confirm which dependents are covered on your health plan.
- Estimate your future retirement benefit and save the estimates to view later.
- Send and receive secure messages.
- Order and download publications.
- Send account information to third parties, such as banks.
- Apply for service retirement.
- Change your beneficiary designation.
- Retirees can update contact information, set up direct deposit, and change tax withholdings.

CalPERS Education Center

Whether you're in the early stages of your career or getting ready to retire, visit the CalPERS Education Center in my|CalPERS to:

- Take online classes that help you have a better understanding of your CalPERS benefits.
- Register for instructor-led classes at a location near you.
- Download class materials and access information about your current and past classes.
- Schedule a one-on-one appointment with a representative at your nearest CalPERS Regional Office.

Experience CalPERS Through Social Media

-  Facebook: www.facebook.com/myCalPERS
-  Twitter: www.twitter.com/CalPERS
-  Instagram: www.instagram.com/CalPERS
-  YouTube: www.youtube.com/CalPERSNetwork
-  LinkedIn: www.linkedin.com/company/calpers

Reach Us by Phone

Call us toll free at **888 CalPERS** (or **888-225-7377**).
Monday through Friday, 8:00 a.m. to 5:00 p.m.
TTY: (877) 249-7442

Visit Your Nearest CalPERS Regional Office

Fresno Regional Office

10 River Park Place East, Suite 230
Fresno, CA 93720

Glendale Regional Office

Glendale Plaza
655 North Central Avenue, Suite 1400
Glendale, CA 91203

Orange Regional Office

500 North State College Boulevard, Suite 750
Orange, CA 92868

Sacramento Regional Office

Lincoln Plaza East
400 Q Street, Room 1820
Sacramento, CA 95811

San Bernardino Regional Office

650 East Hospitality Lane, Suite 330
San Bernardino, CA 92408

San Diego Regional Office

7676 Hazard Center Drive, Suite 350
San Diego, CA 92108

San Jose Regional Office

181 Metro Drive, Suite 520
San Jose, CA 95110

Walnut Creek Regional Office

Pacific Plaza
1340 Treat Boulevard, Suite 200
Walnut Creek, CA 94597

Visit the CalPERS website for directions to your local office.

Regional Office hours are Monday through Friday, 8:00 a.m. to 5:00 p.m.

GLOSSARY

This glossary can help you understand some of the words and phrases you may encounter when dealing with CalPERS.

Beneficiary

A person you designate to receive a benefit after your death or other benefit recipient. (Also, see survivor, which has a different definition. Your beneficiary and survivor may or may not be the same person.)

Benefit Factor

The percentage of pay you are entitled to for each year of CalPERS-covered service. It is determined by your age at retirement and your retirement formula.

Break in Service

A break in service begins when you permanently separate from CalPERS-covered employment. A leave of absence, such as maternity leave, military leave, etc. is not considered a break in service.

CalPERS Medicare Plan

For CalPERS members in Social Security due to age (over 65) or Social Security-approved disability, Medicare becomes the primary payer of claims. If you have CalPERS health benefits coverage in retirement, the CalPERS Medicare health plan helps pay costs not covered by Medicare.

COBRA

The Consolidated Omnibus Budget Reconciliation Act (COBRA) is federal legislation that allows you or a family member to continue health plan enrollment when there is an involuntary loss of coverage. A loss of coverage could include separation from employment, a dependent reaching age 26, or divorce.

Dependent

Those family members who meet the specific eligibility criteria for coverage in the CalPERS Health Program. This includes your children up to age 26 who may or may not be dependent upon you for support.

Disability

An inability to substantially perform the duties of your job due to illness or injury, which is determined to be permanent or of an extended and uncertain duration.

Domestic Partner

Registered domestic partners legally recognized by California law are qualified for benefits and rights that apply to a spouse.

Final Compensation

Your final compensation is your highest average annual compensation during any consecutive 12- or 36-month period of employment, depending on your membership date and employer's contract. Which compensation period

we use depends on your retirement formula(s). If you are not sure, ask your personnel office. We use your full-time pay rate, not your earnings. If you work part time, we will use your full-time equivalent pay rate to determine your final compensation. myCalPERS automatically finds and uses the highest compensation period during your employment with CalPERS.

Fiscal Year

CalPERS operates on a fiscal year calendar, which is July 1 to June 30.

Health Insurance Portability & Accountability Act (HIPAA)

This federal law protects health insurance coverage for workers and their families when they change or lose their jobs. It also includes provisions providing national standards to protect the privacy of personal health information.

Member

An employee who qualifies for membership in CalPERS and whose employer has become obligated to pay contributions into the Retirement Fund.

Open Enrollment Period

A period of time determined by the CalPERS Board when you can enroll or change health plans, or add eligible family members not currently enrolled in the CalPERS Health Program.

PEMHCA

Public Employees' Medical and Hospital Care Act. Government Code sections 22751 et seq. is the body of state law that governs the CalPERS Health Program.

Reciprocal Agreement

An agreement between CalPERS and many public retirement systems within California that allows movement from one public employer to another, within a specified time limit, without losing valuable retirement rights and benefits.

Service Credit

Your credited years of employment with a CalPERS employer. This amount of service is credited to your CalPERS account and used in the formula to determine your retirement benefits. In some cases, other types of service credit (e.g., sick leave and service credit purchases) can be credited to your retirement account and used to enhance your retirement benefits.

Special Compensation

Additional income you might receive for uniform allowance, holiday pay, longevity pay, etc., and is reported separately from your base pay.

Survivor

A family member defined by law as eligible to receive specific benefits at your death.

PRIVACY NOTICE

The privacy of personal information is of the utmost importance to CalPERS. The following information is provided to you in compliance with the Information Practices Act of 1977 and the Federal Privacy Act of 1974.

Information Purpose

The information requested is collected pursuant to the Government Code (sections 20000 et seq.) and will be used for administration of Board duties under the Retirement Law, the Social Security Act, and the Public Employees' Medical and Hospital Care Act, as the case may be. Submission of the requested information is mandatory. Failure to comply may result in CalPERS being unable to perform its functions regarding your status. Please do not include information that is not requested.

Social Security Numbers

Social Security numbers are collected on a mandatory and voluntary basis. If this is CalPERS' first request for disclosure of your Social Security number, then disclosure is mandatory. If your Social Security number has already been provided, disclosure is voluntary. Due to the use of Social Security numbers by other agencies for identification purposes, we may be unable to verify eligibility for benefits without the number.

Social Security numbers are used for the following purposes:

1. Enrollee identification
2. Payroll deduction/state contributions
3. Billing of contracting agencies for employee/employer contributions
4. Reports to CalPERS and other state agencies
5. Coordination of benefits among carriers
6. Resolving member appeals, complaints, or grievances with health plan carriers

Information Disclosure

Portions of this information may be transferred to other state agencies (such as your employer), physicians, and insurance carriers, but only in strict accordance with current statutes regarding confidentiality.

Your Rights

You have the right to review your membership files maintained by the System. For questions about this notice, our Privacy Policy, or your rights, please write to the CalPERS Privacy Officer at 400 Q Street, Sacramento, CA 95811 or call us at **888 CalPERS** (or **888-225-7377**).

CalPERS is governed by the Public Employees' Retirement Law and the Alternate Retirement Program provisions in the Government Code, together referred to as the Retirement Law. The statements in this publication are general. The Retirement Law is complex and subject to change. If there is a conflict between the law and this publication, any decisions will be based on the law and not this publication. If you have a question that is not answered by this general description, you may make a written request for advice regarding your specific situation directly to the CalPERS Privacy Officer at 400 Q Street, Sacramento, CA 95811.



California Public Employees' Retirement System

400 Q Street
P.O. Box 942701
Sacramento, California 94229-2701

888 CalPERS (or 888-225-7377)

www.calpers.ca.gov

PUB 8

November 2017



2017.11.1



Printed at CalPERS